



STATE OF CALIFORNIA NEW CAPITOL ANNEX BUILDING

JOINT RULES COMMITTEE OF THE LEGISLATURE OF THE STATE OF CALIFORNIA

JRC PRESENTATION

MARCH 22, 2021

SOM LIONÄKIS

Turner
PWP LANDSCAPE ARCHITECTURE
PAGE & TURNBULL

*“California’s new Capitol Annex should convey to visitors California’s positive, hope-filled outlook, founded upon the deliberative Democracy which unfolds there by **welcoming** all Californians, **engaging** all Californians, **safeguarding** the future of all Californians, & demonstrating **healthful, accessible & sustainable** designs while **preserving the beauty & vistas** of California’s legacy Capitol Park & **inviting** all its guests to explore & take **pride** in one of the most **energy-efficient** capitol buildings in the nation.”*

STATE OF CALIFORNIA NEW CAPITOL ANNEX BUILDING
JOINT RULES COMMITTEE OF THE LEGISLATURE OF THE STATE OF CALIFORNIA

JRC PRESENTATION
MARCH 22, 2021

AGENDA

- 1. INTRODUCTION & OVERVIEW**
- 2. SITE DESIGN PRINCIPLES**
- 3. PARK & TREE PRESERVATION**
- 4. NEW CAPITOL ANNEX CONCEPTS**
 - **PLANS & STACKING DIAGRAMS**
 - **PUBLIC SPACE & LIGHT COURT**
 - **MASSING & FACADE DESIGN**

INTRODUCTION & OVERVIEW

“California’s new Capitol Annex should convey... healthful, accessible, and sustainable designs...”

INTRODUCTION & OVERVIEW

The Capitol Annex Project is being done to address these current building deficiencies:

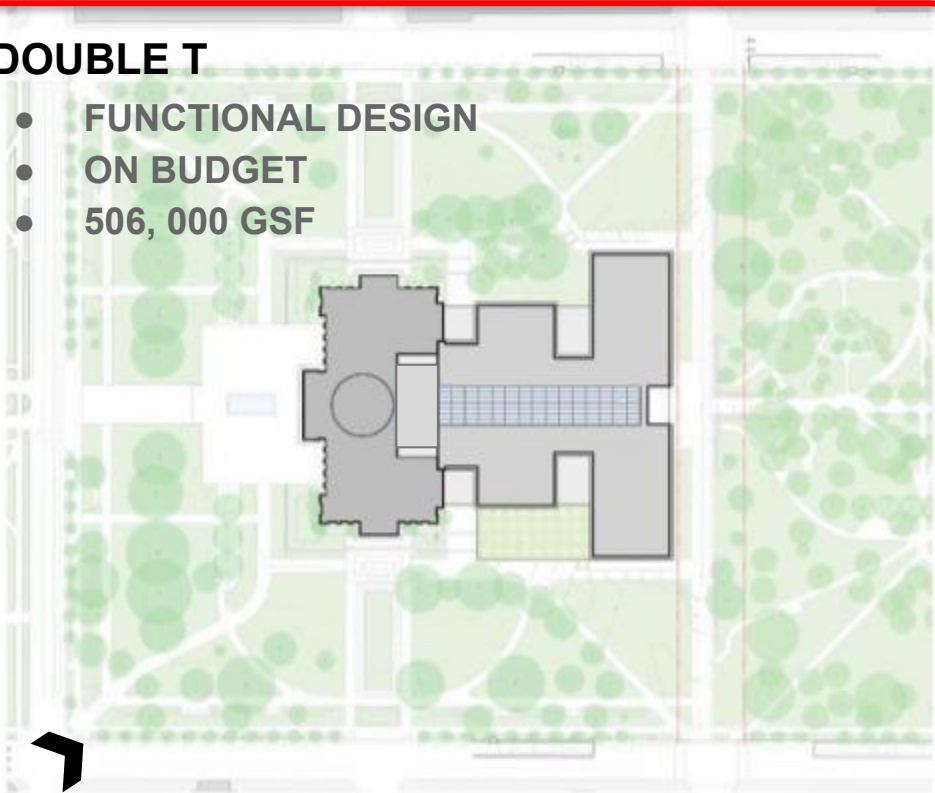
- **ADA Access Compliance & Circulation**
- **Hazardous Materials**
- **Antiquated Building Systems**
- **Outdated Seismic Design**
- **Insufficient Public and Meeting Rooms**
- **Inadequate Office Spaces**
- **Floors Not Aligned**
- **Fire and Life Safety Concerns**
- **Security**
- **Outdated Building Code**

INTRODUCTION & OVERVIEW

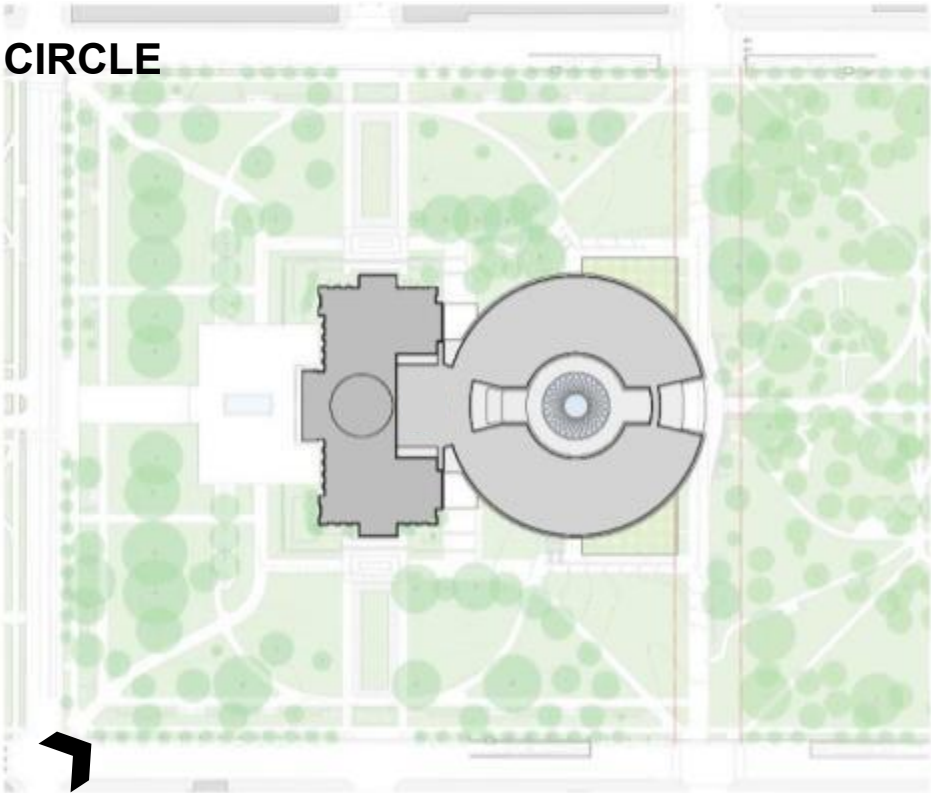
3 SCHEMES

DOUBLE T

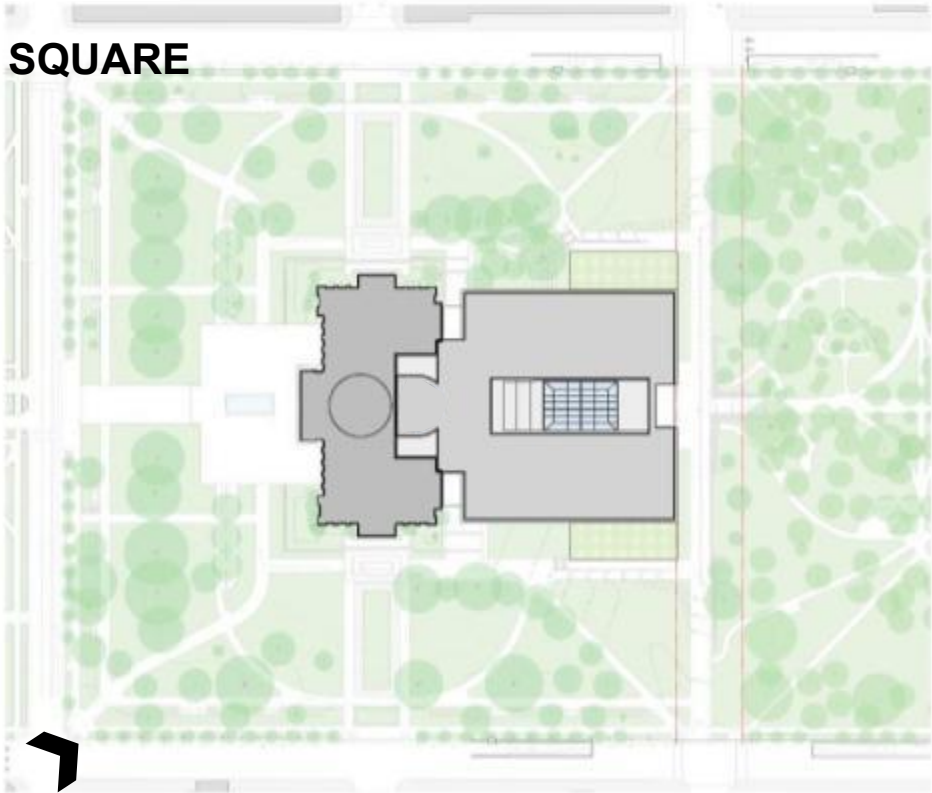
- FUNCTIONAL DESIGN
- ON BUDGET
- 506, 000 GSF



CIRCLE



SQUARE



INTRODUCTION & OVERVIEW
DOUBLE T



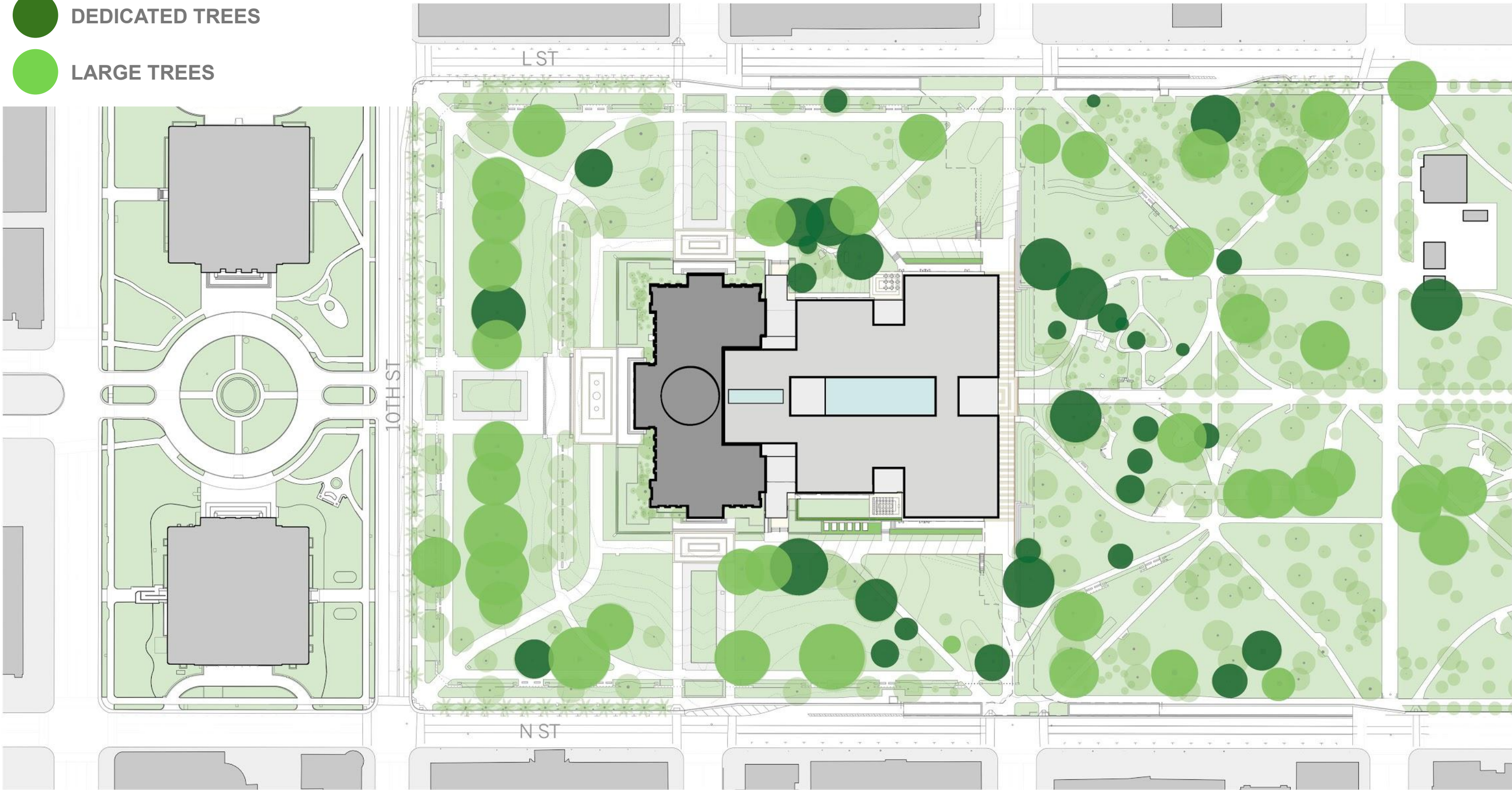
SITE DESIGN PRINCIPLES

“California’s new Capitol Annex should... preserve the beauty & vistas of California’s legacy Capitol Park & invite all its guests to explore & take pride...”

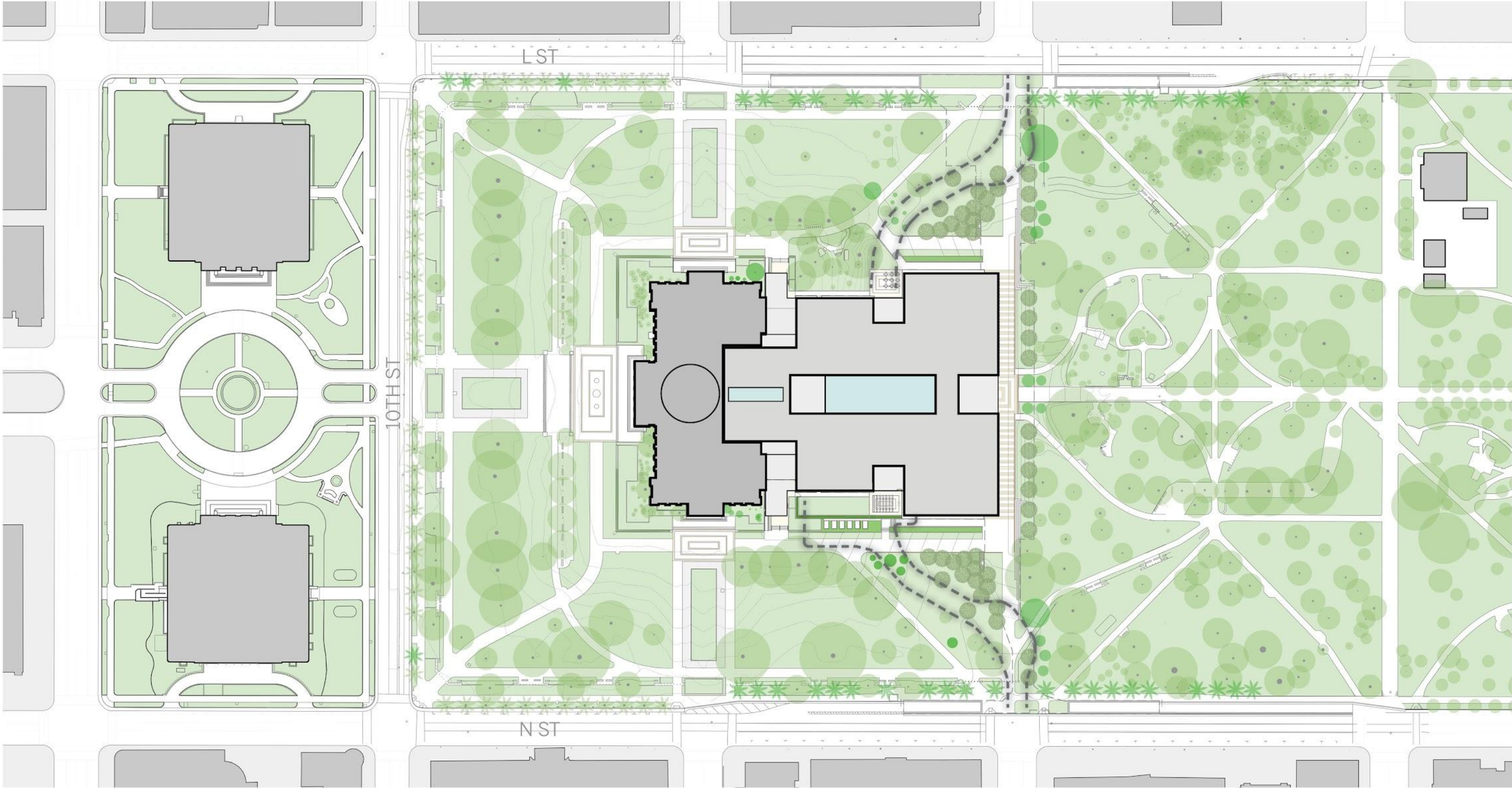
SITE DESIGN PRINCIPLES

“PRESERVE THE BEAUTY OF THE PARK”

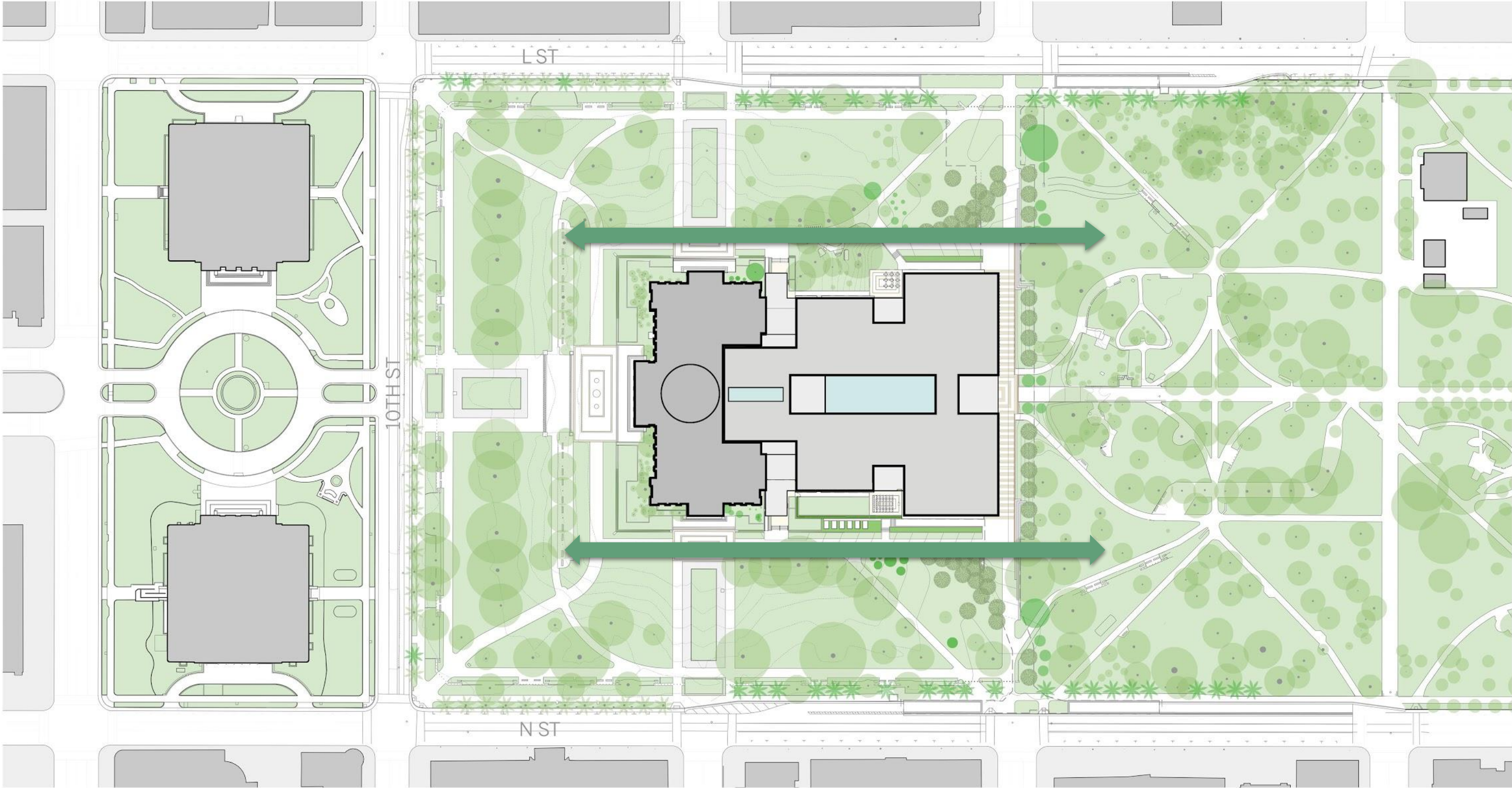
- DEDICATED TREES
- LARGE TREES



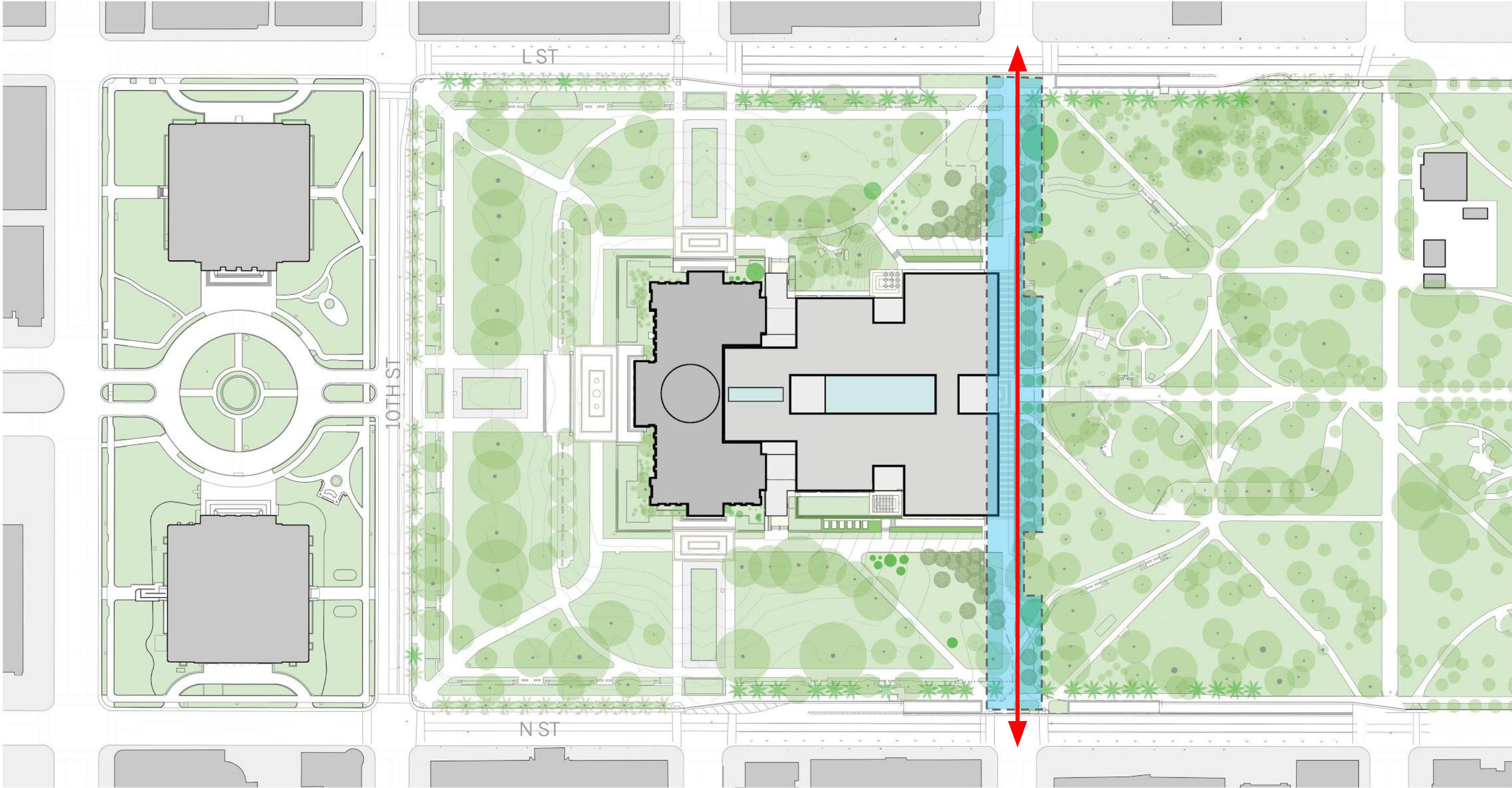
SITE DESIGN PRINCIPLES RECONNECT THE PARK



SITE DESIGN PRINCIPLES RECONNECT THE PARK

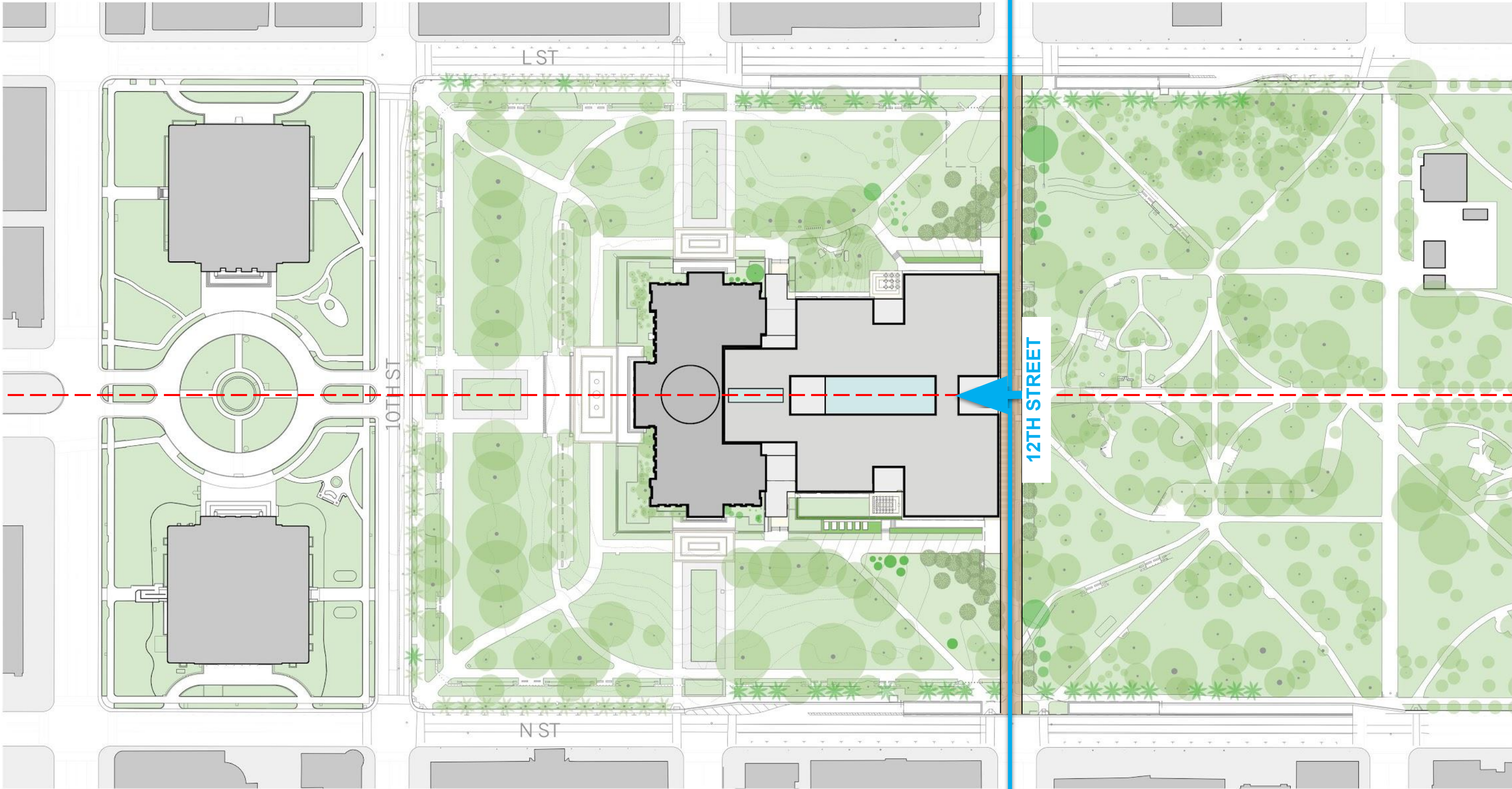


SITE DESIGN PRINCIPLES RECONNECT THE PARK

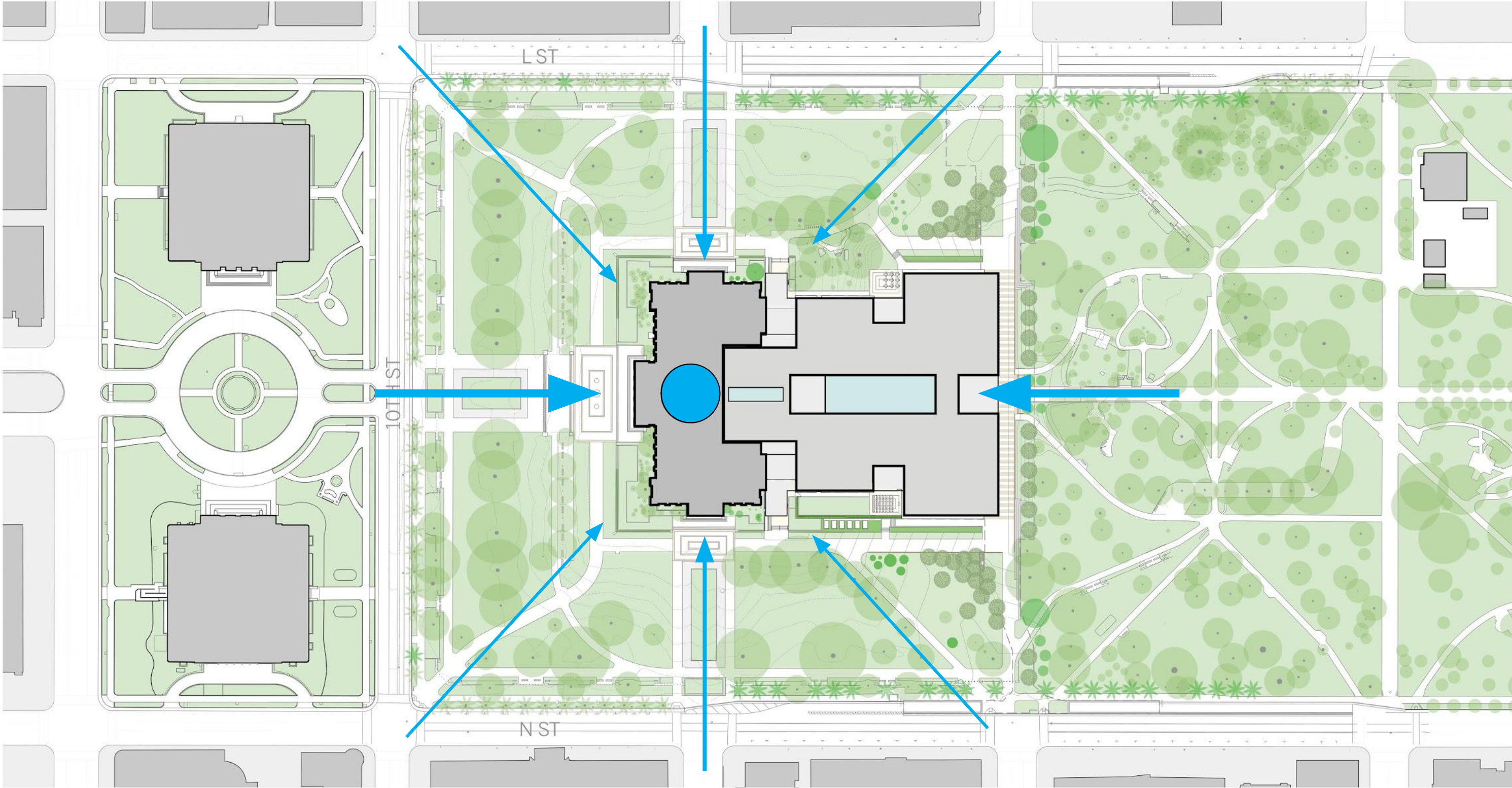


SITE DESIGN PRINCIPLES

“INVITING ALL ITS GUESTS”: 12TH STREET PROMENADE



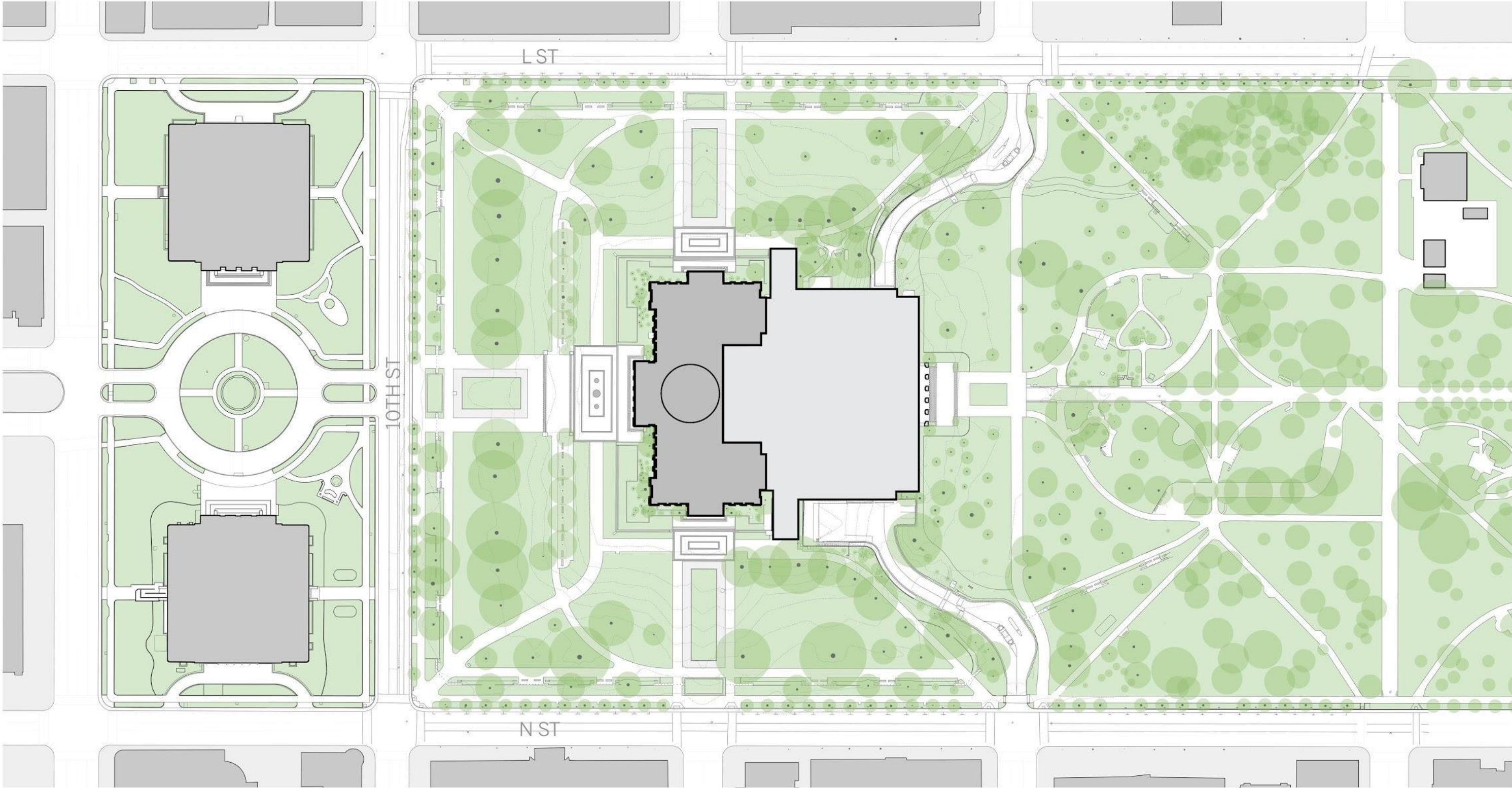
SITE DESIGN PRINCIPLES
"PRESERVE THE VISTAS OF THE PARK"



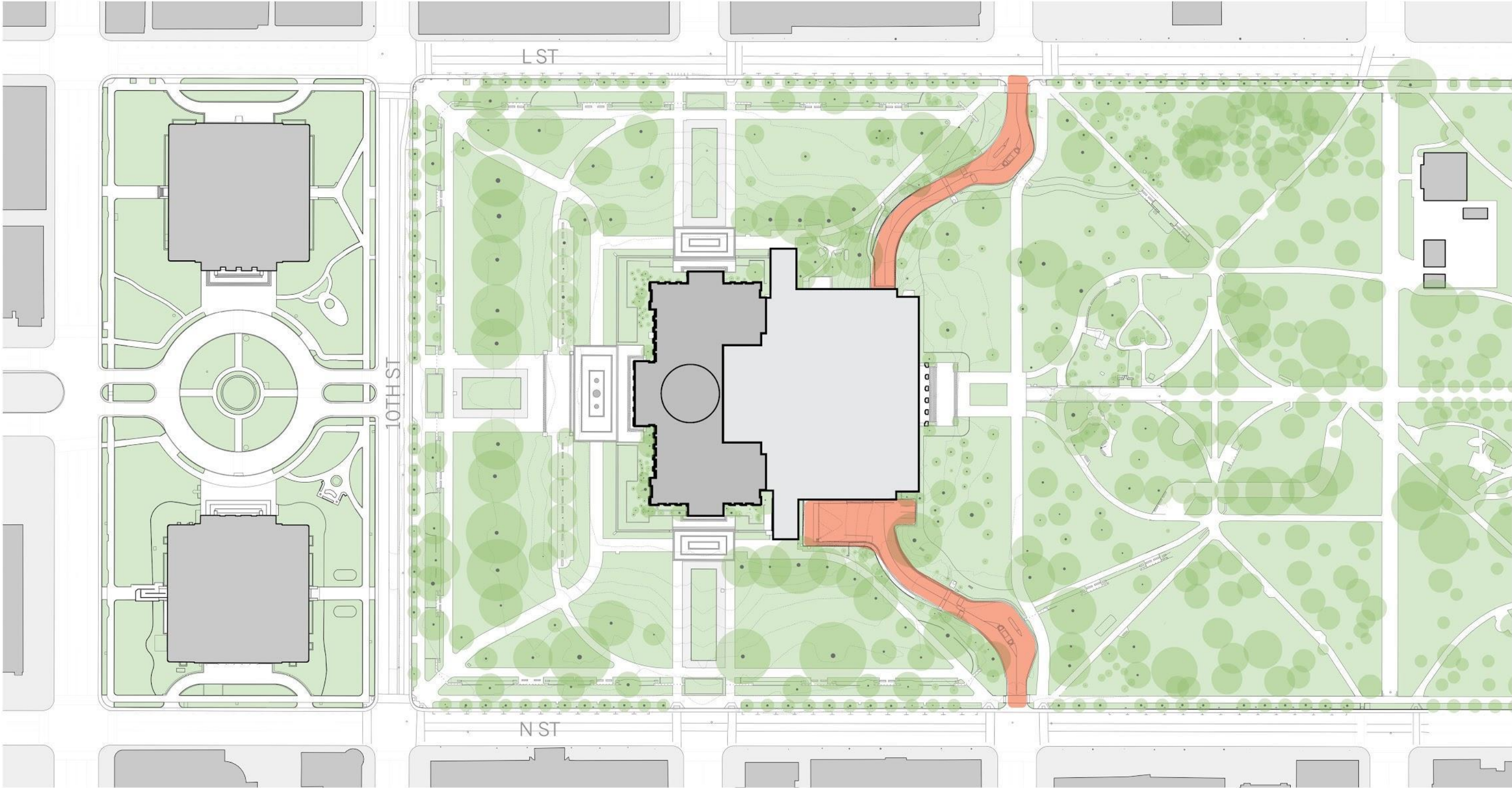
PARK & TREE PRESERVATION

“California’s new Capitol Annex should... preserve the beauty & vistas of California’s legacy Capitol Park & invite all its guests to explore & take pride...”

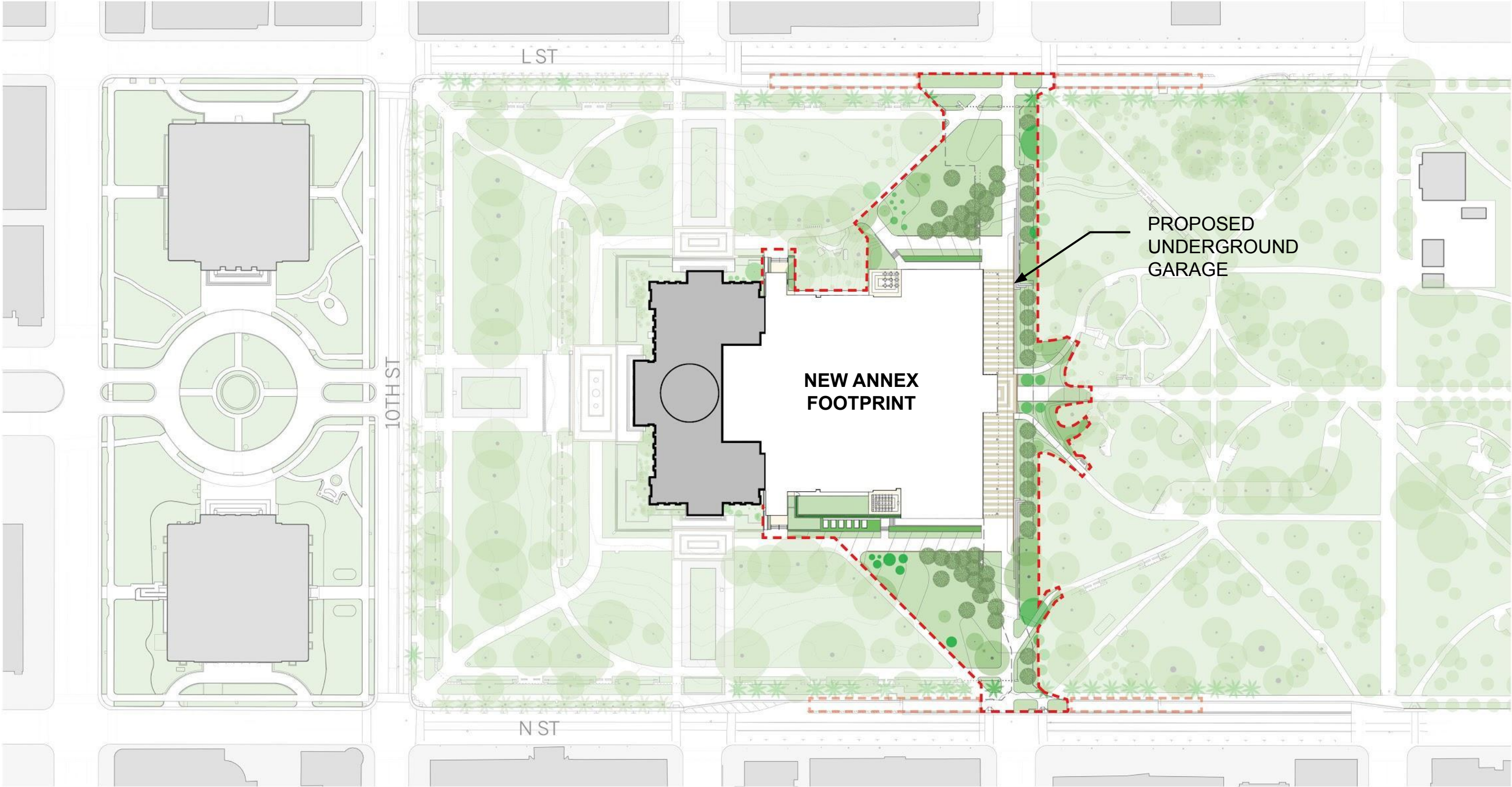
PARK & TREE PRESERVATION EXISTING SITE



PARK & TREE PRESERVATION IMPROVING THE PARK EXPERIENCE

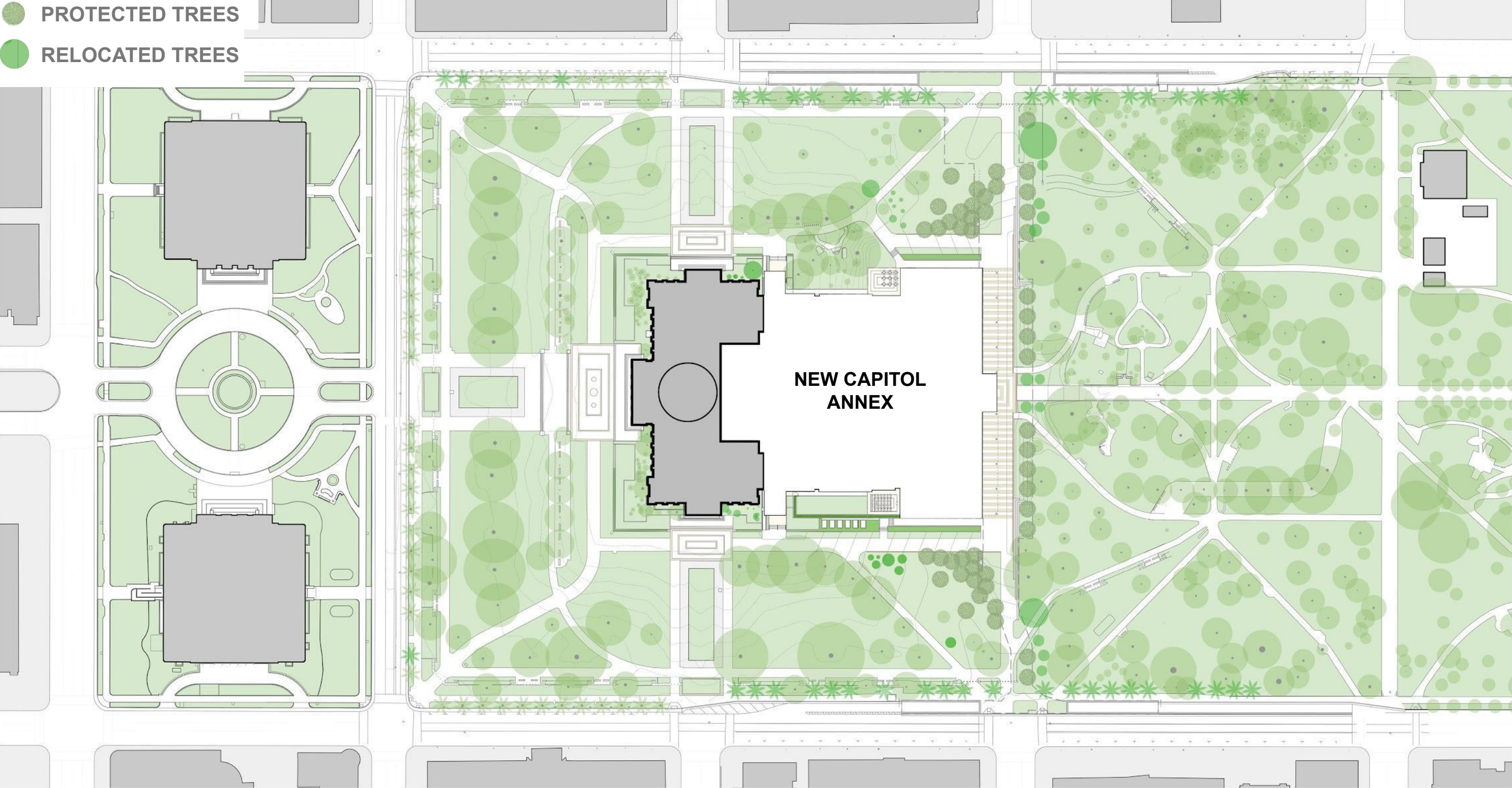


PARK & TREE PRESERVATION PROPOSED SITE



PARK & TREE PRESERVATION PROPOSED SITE

- PROTECTED TREES
- RELOCATED TREES

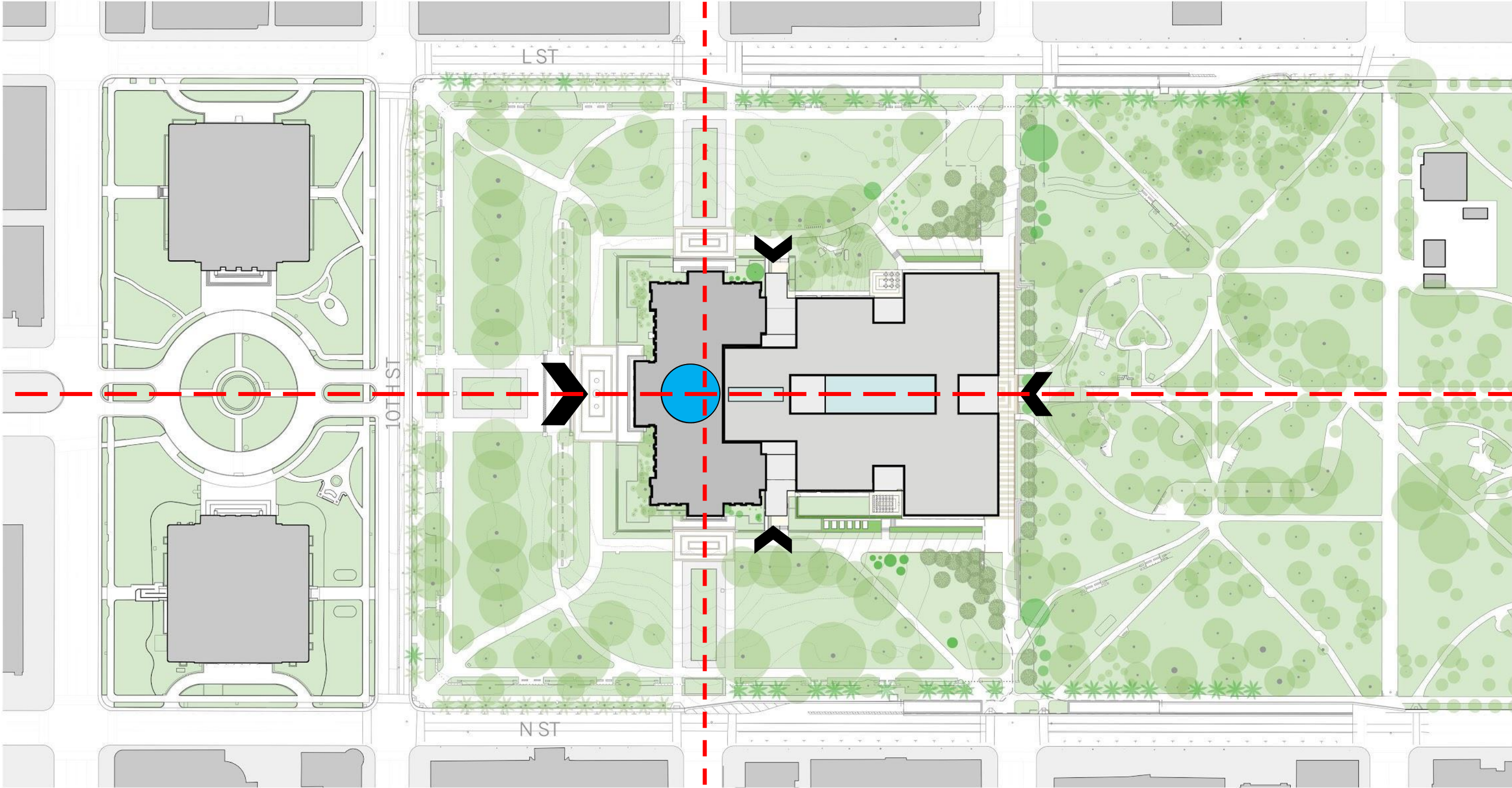


NEW CAPITOL ANNEX CONCEPTS

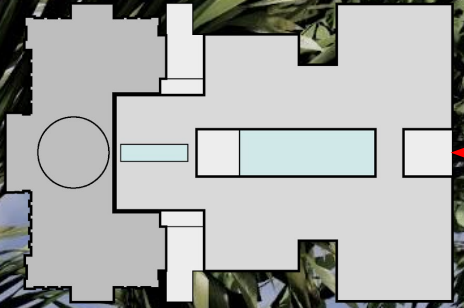
BUILDING ENTRIES & PUBLIC SPACE

“California’s new Capitol Annex should... welcome all Californians, engage all Californians, safeguard the future of all Californians, & demonstrate healthful, accessible & sustainable designs...”

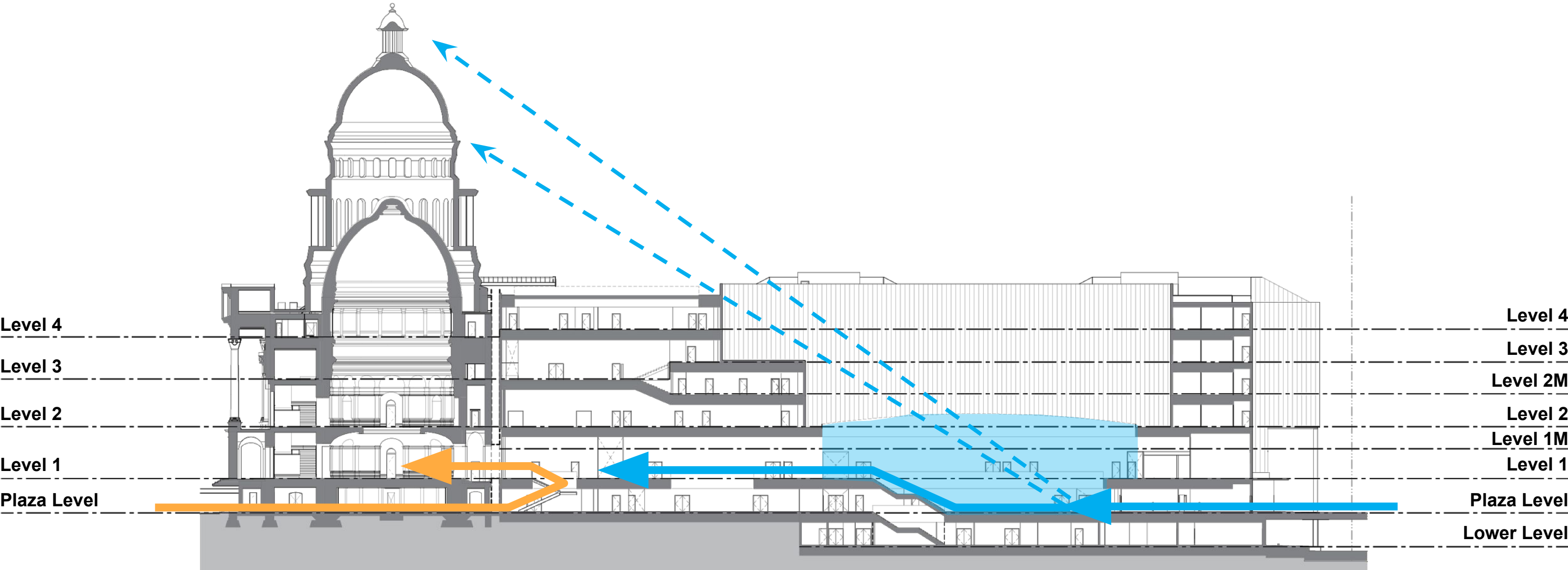
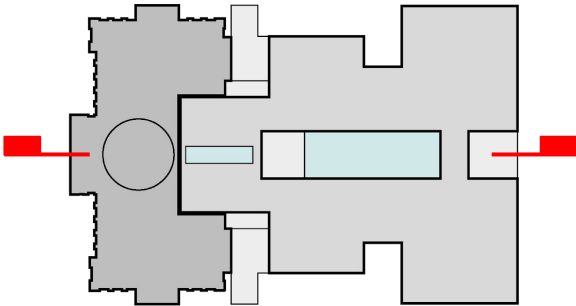
BUILDING ENTRIES & PUBLIC SPACE
“WELCOMING, ENGAGING & SAFEGUARDING”



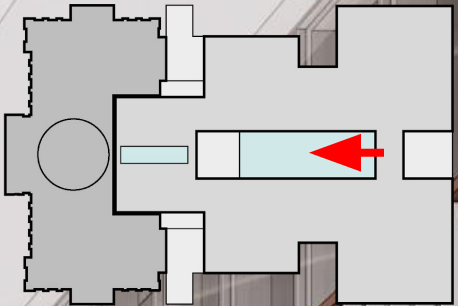
PUBLIC SPACE & LIGHT COURT
“WELCOMING, ENGAGING & SAFEGUARDING”



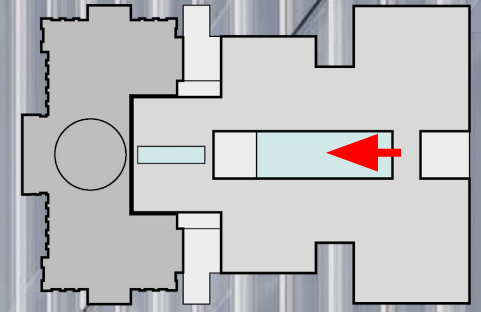
BUILDING ENTRIES & PUBLIC SPACE MAIN PUBLIC CIRCULATION & VIEWS



BUILDING ENTRIES & PUBLIC SPACE
LIGHT COURT



BUILDING ENTRIES & PUBLIC SPACE
LIGHT WELL

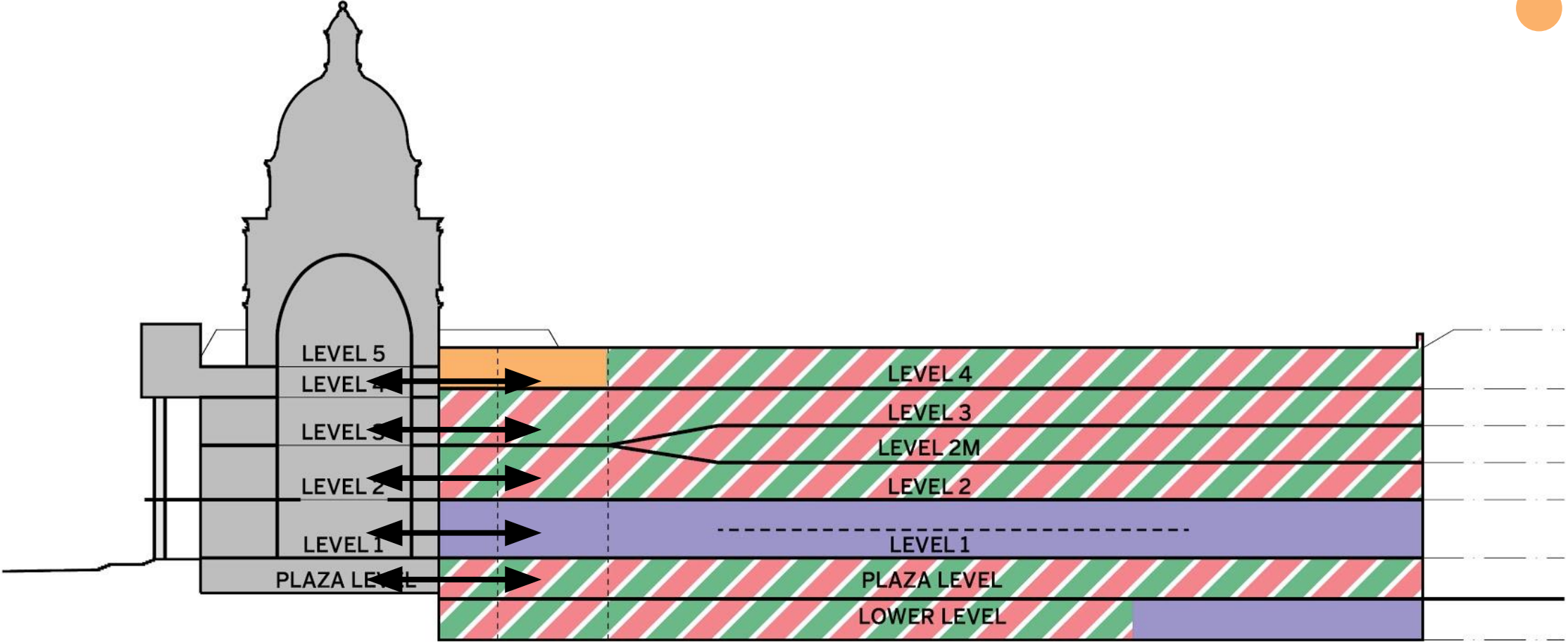


NEW CAPITOL ANNEX CONCEPTS PLANS & STACKING DIAGRAMS

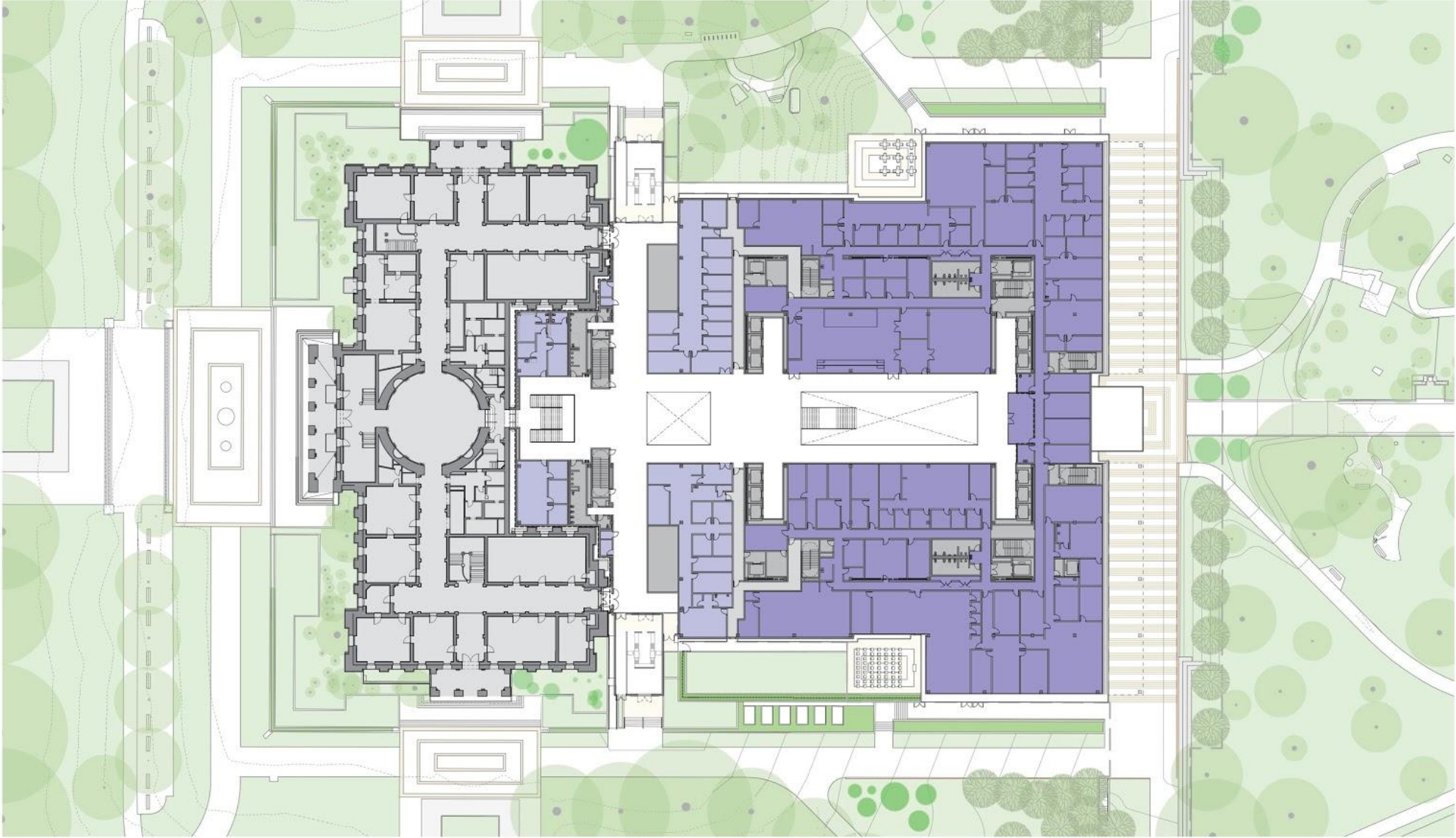
“California’s new Capitol Annex should... welcome all Californians, engage all Californians, safeguard the future of all Californians, & demonstrate healthful, accessible & sustainable designs...”

PLANS & STACKING DIAGRAMS
 “ONE BUILDING”: STACKING DIAGRAM

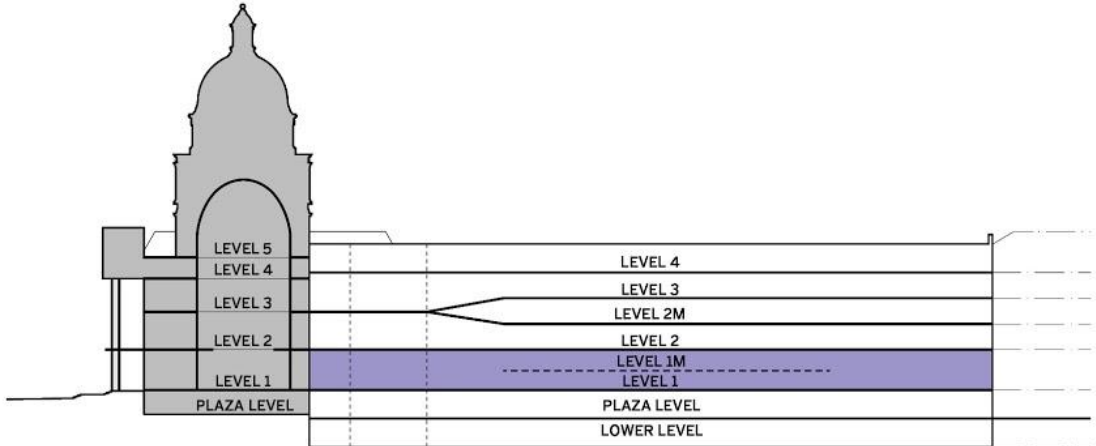
- ASSEMBLY
- SENATE
- EXECUTIVE
- JOINT SUPPORT



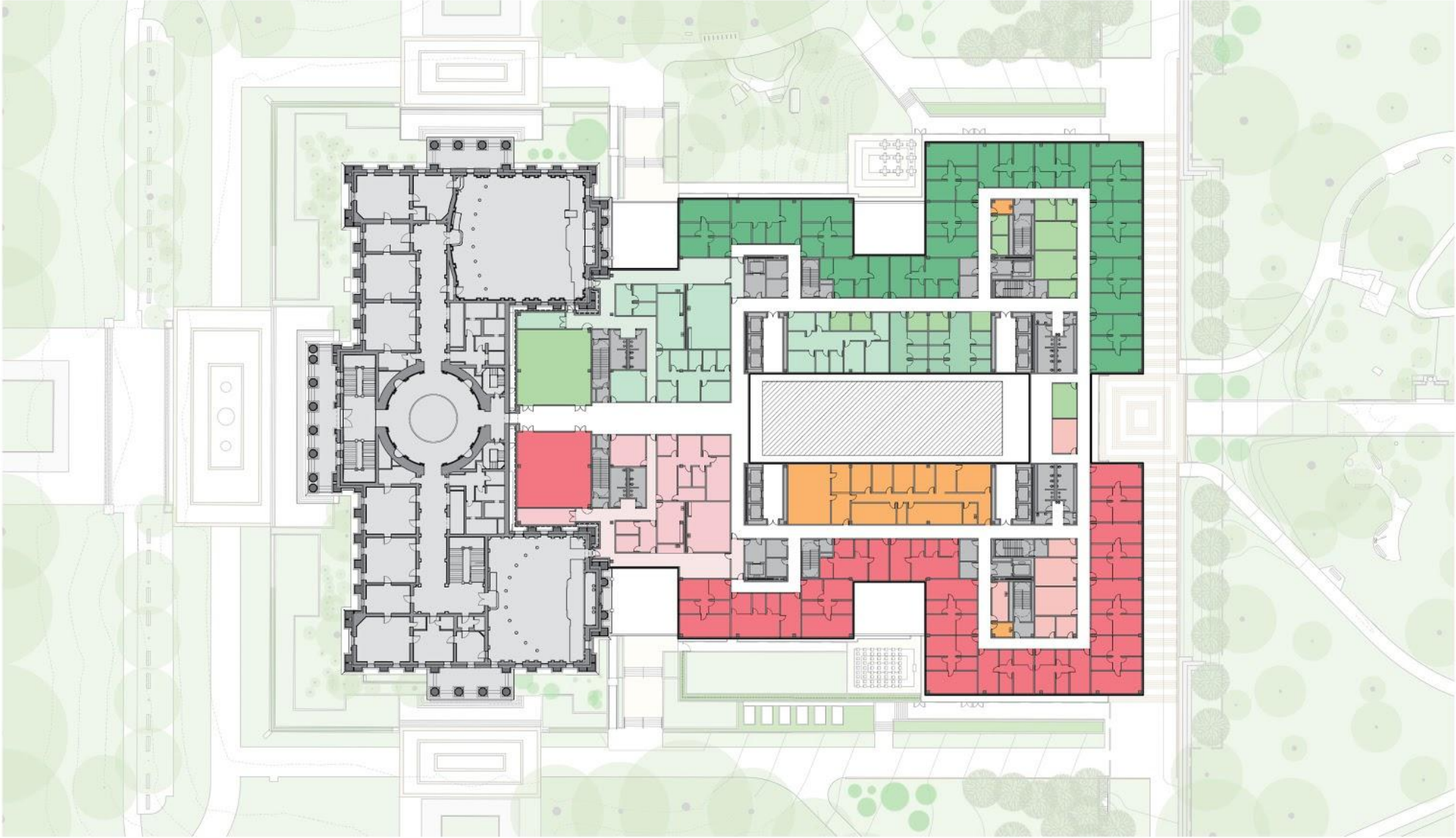
PLANS & STACKING DIAGRAMS
 LEVEL 1 - EXECUTIVE



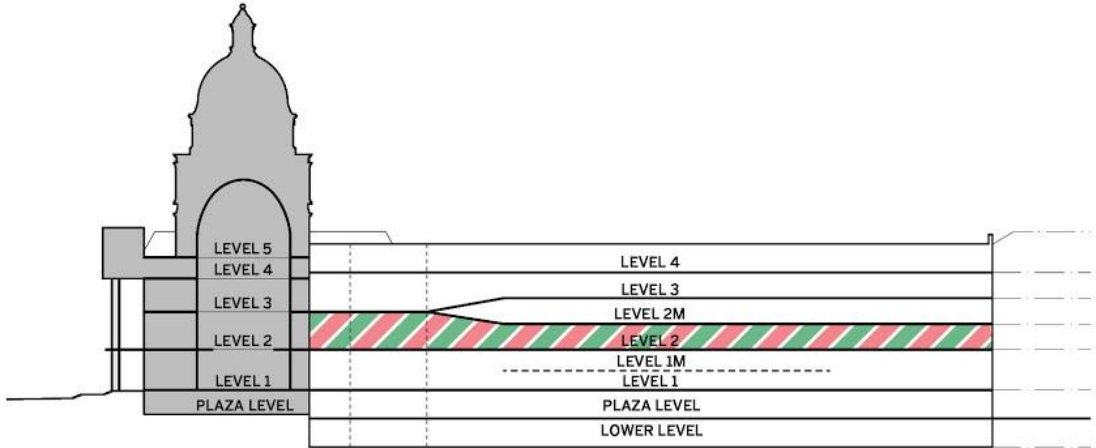
- ASSEMBLY
- SENATE
- EXECUTIVE
- JOINT SUPPORT



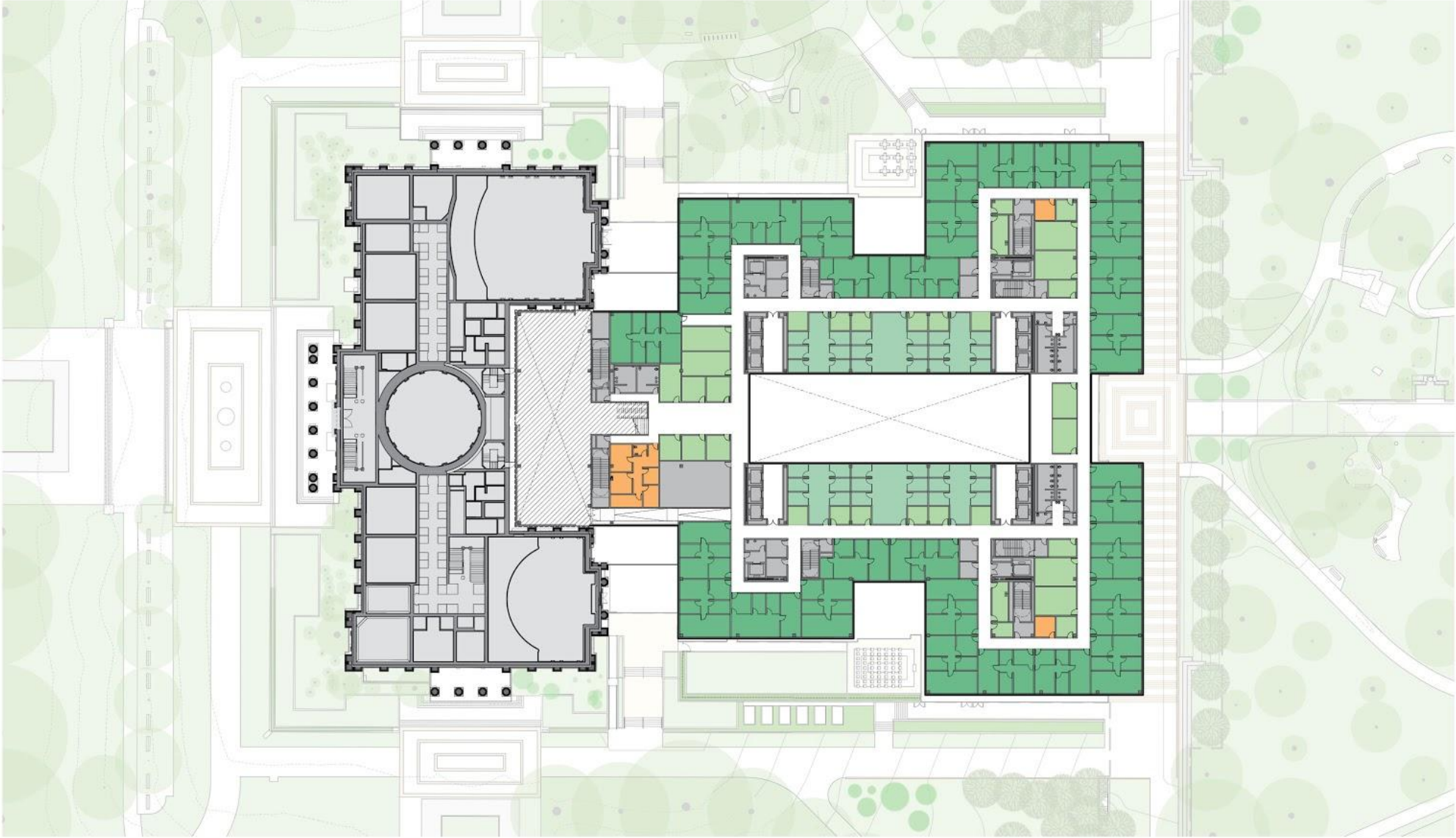
PLANS & STACKING DIAGRAMS
LEVEL 2 - LEGISLATIVE



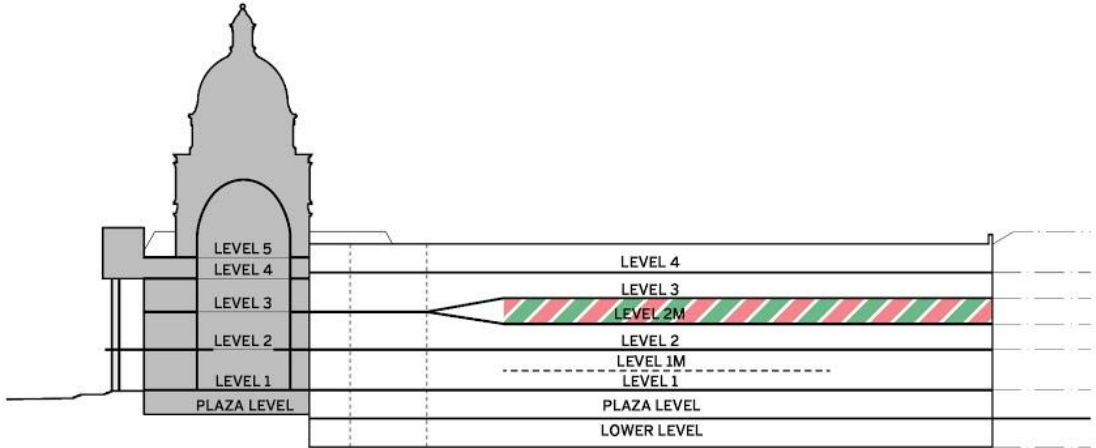
- ASSEMBLY
- SENATE
- EXECUTIVE
- JOINT SUPPORT



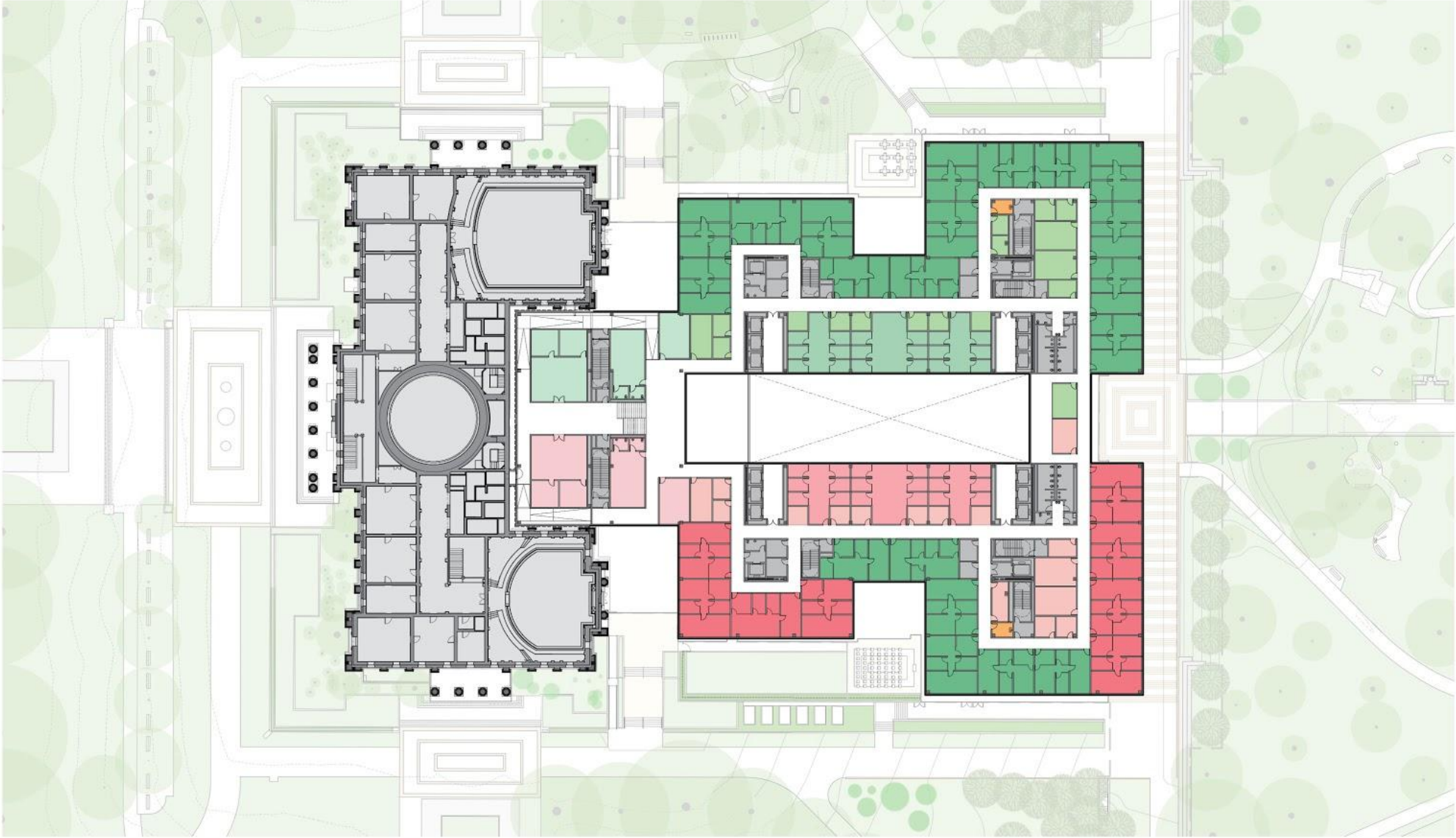
PLANS & STACKING DIAGRAMS
 LEVEL 2M - LEGISLATIVE



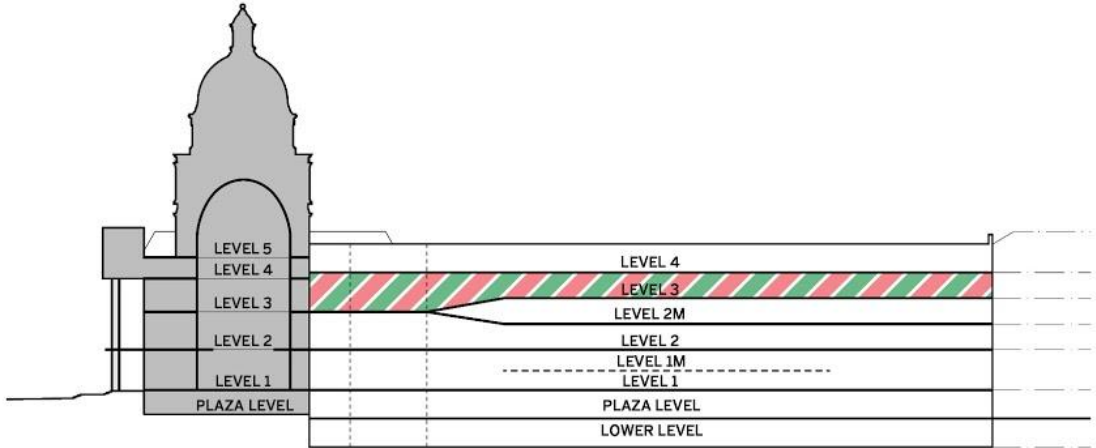
- ASSEMBLY
- SENATE
- EXECUTIVE
- JOINT SUPPORT



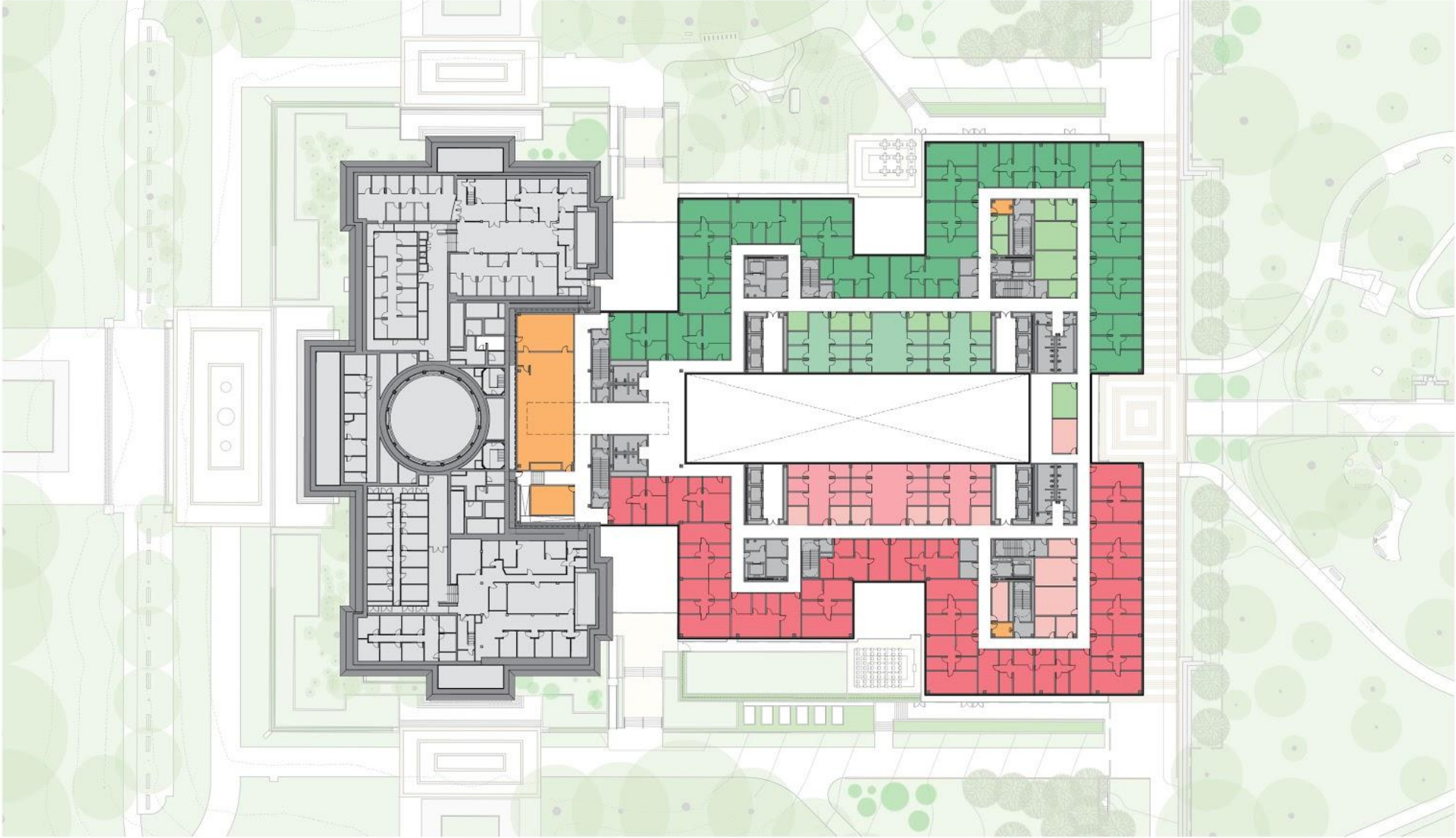
PLANS & STACKING DIAGRAMS
LEVEL 3 - LEGISLATIVE



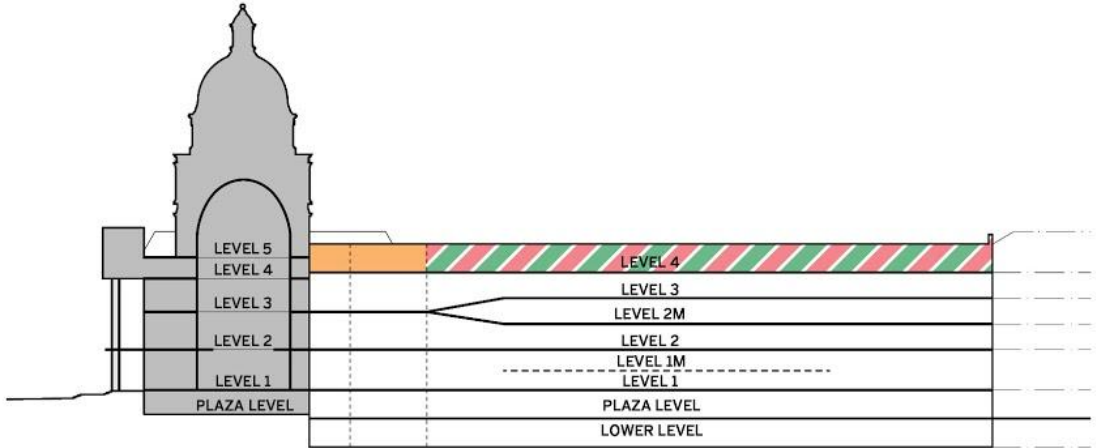
- ASSEMBLY
- SENATE
- EXECUTIVE
- JOINT SUPPORT



PLANS & STACKING DIAGRAMS
 LEVEL 4 - LEGISLATIVE & CAFE



- ASSEMBLY
- SENATE
- EXECUTIVE
- JOINT SUPPORT



PLANS & STACKING DIAGRAMS

PLAZA LEVEL - HEARING ROOMS

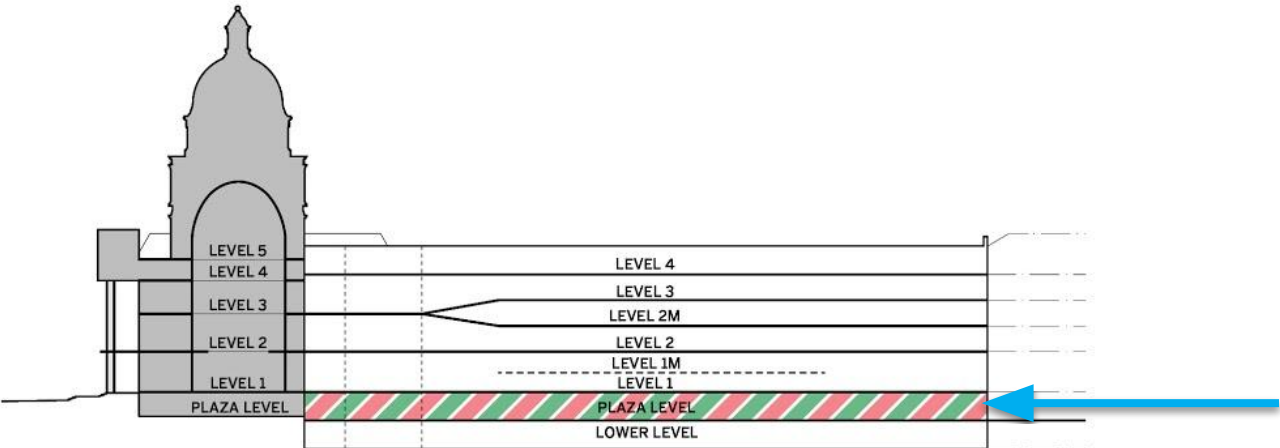
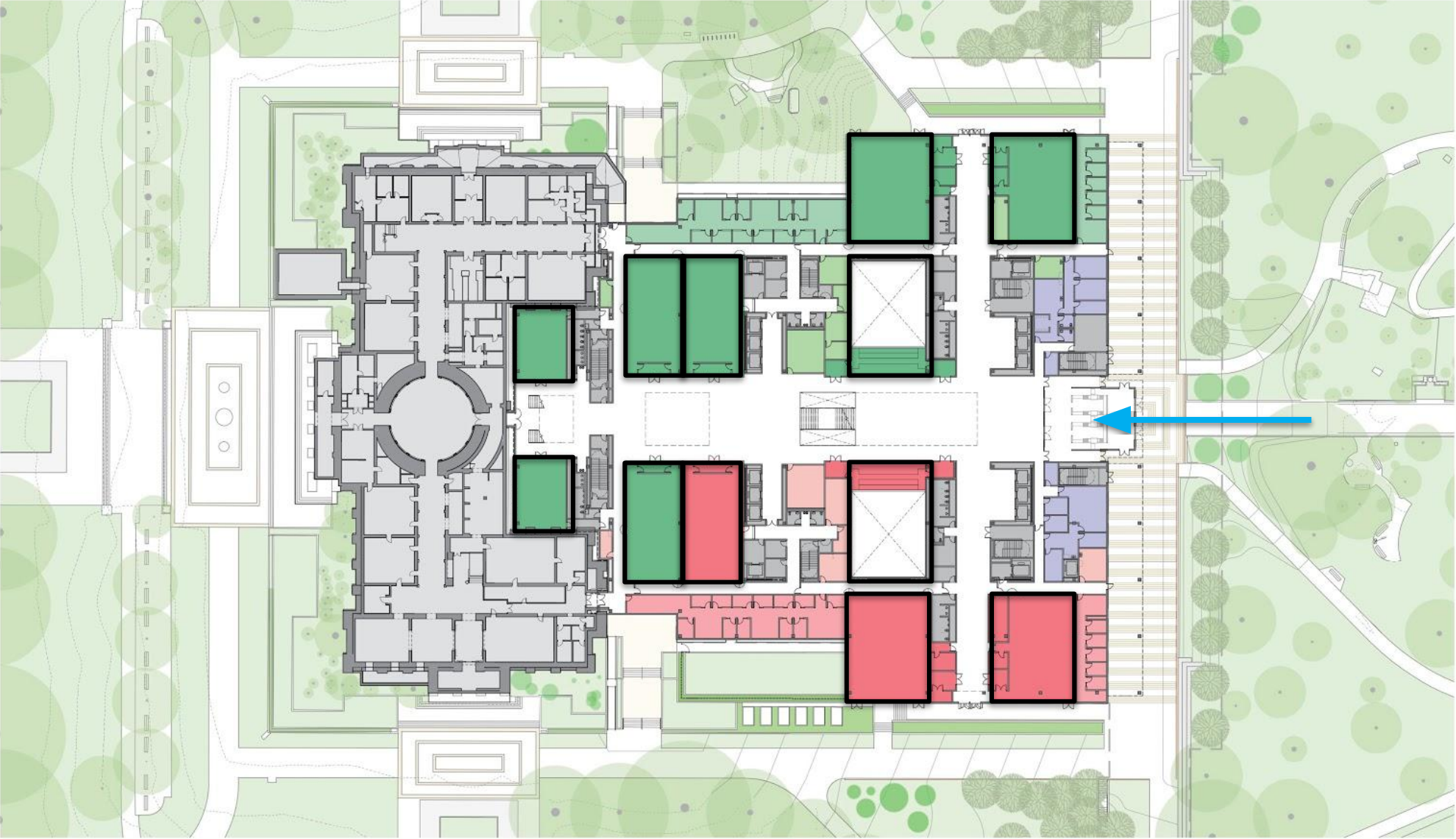
ASSEMBLY

- 1 LG
- 2 MD
- 5 S
- 2 XS

SENATE

- 1 LG
- 2 MD
- 2 S
- 0 XS

- ASSEMBLY
- SENATE
- EXECUTIVE
- JOINT SUPPORT

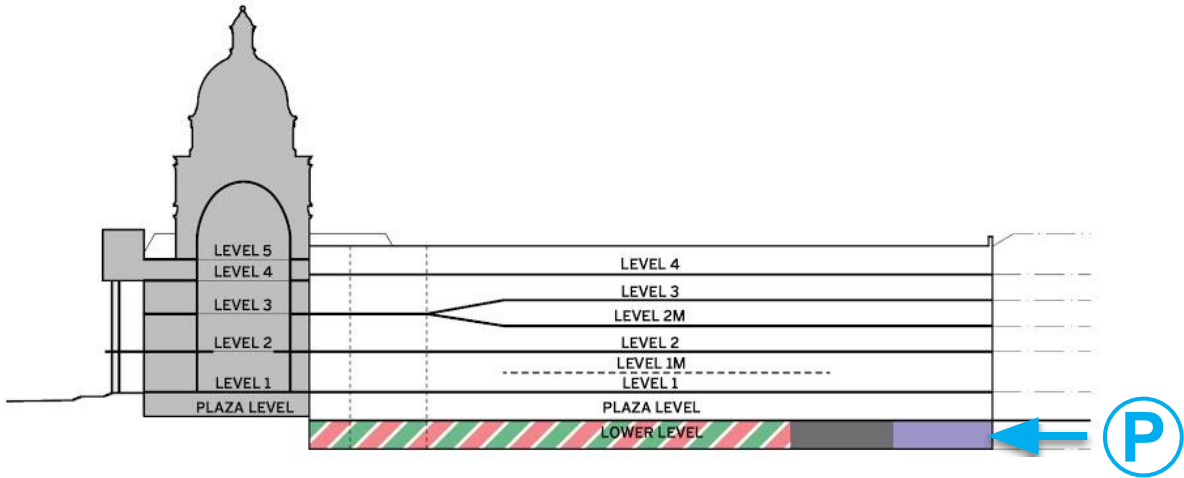


PLANS & STACKING DIAGRAMS

LOWER LEVEL - HEARING ROOMS, FACILITIES & PARKING



- ASSEMBLY
- SENATE
- EXECUTIVE
- JOINT SUPPORT



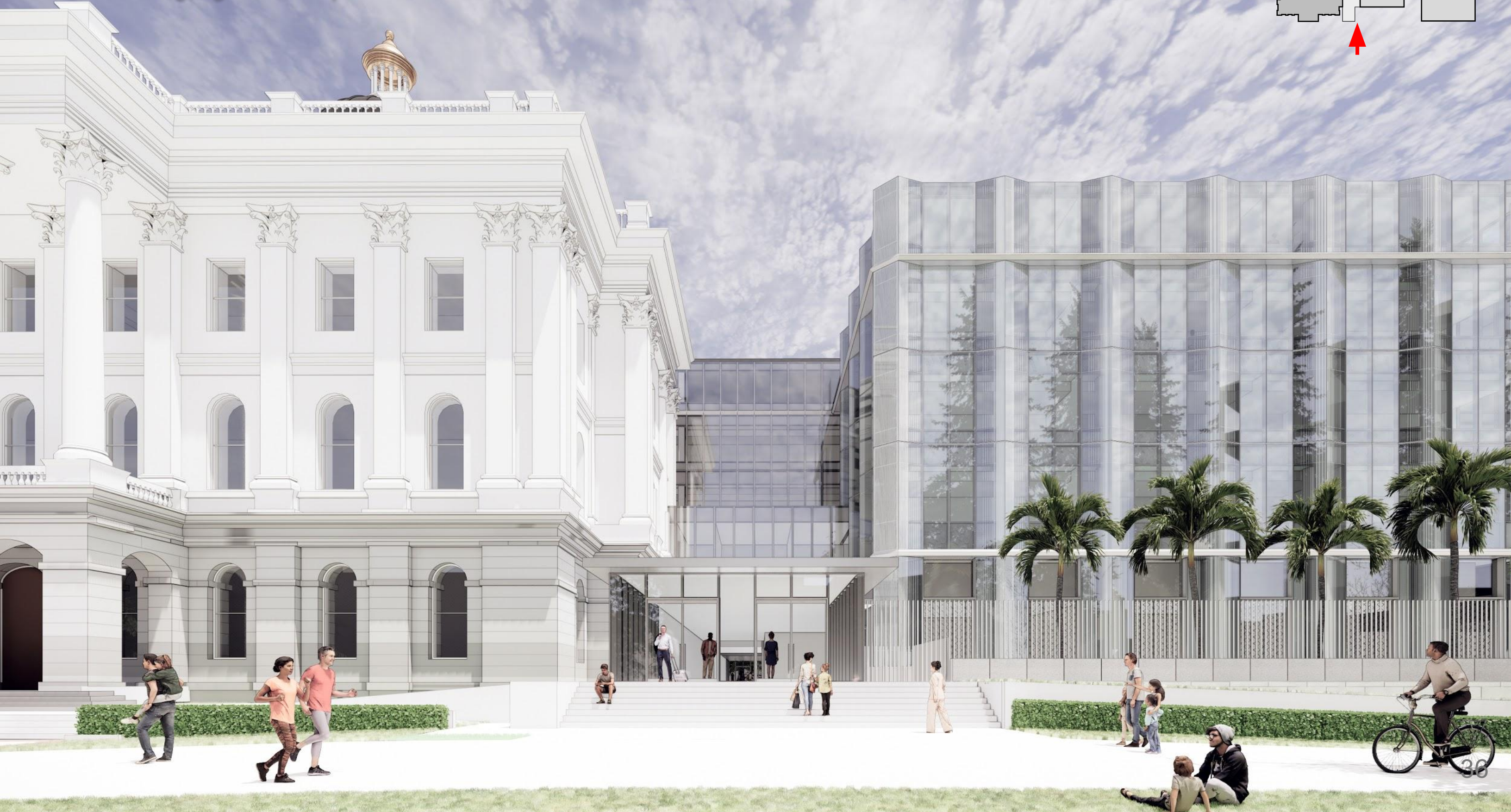
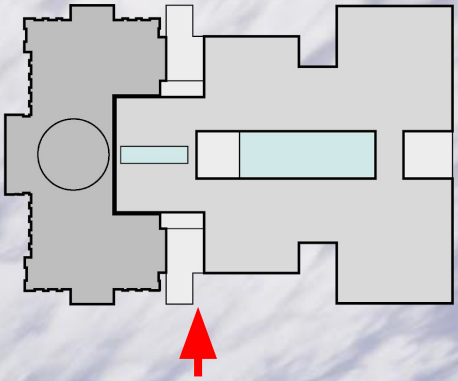
NEW CAPITOL ANNEX CONCEPTS

MASSING & FACADE DESIGN

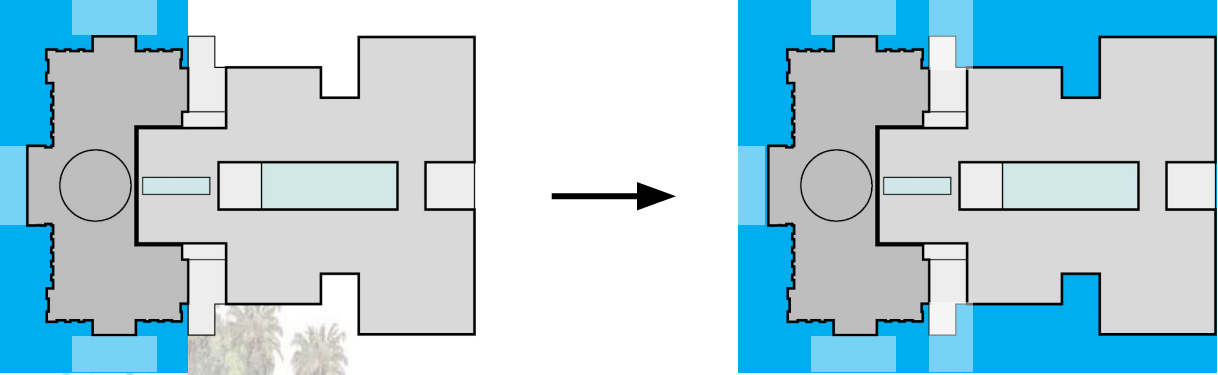
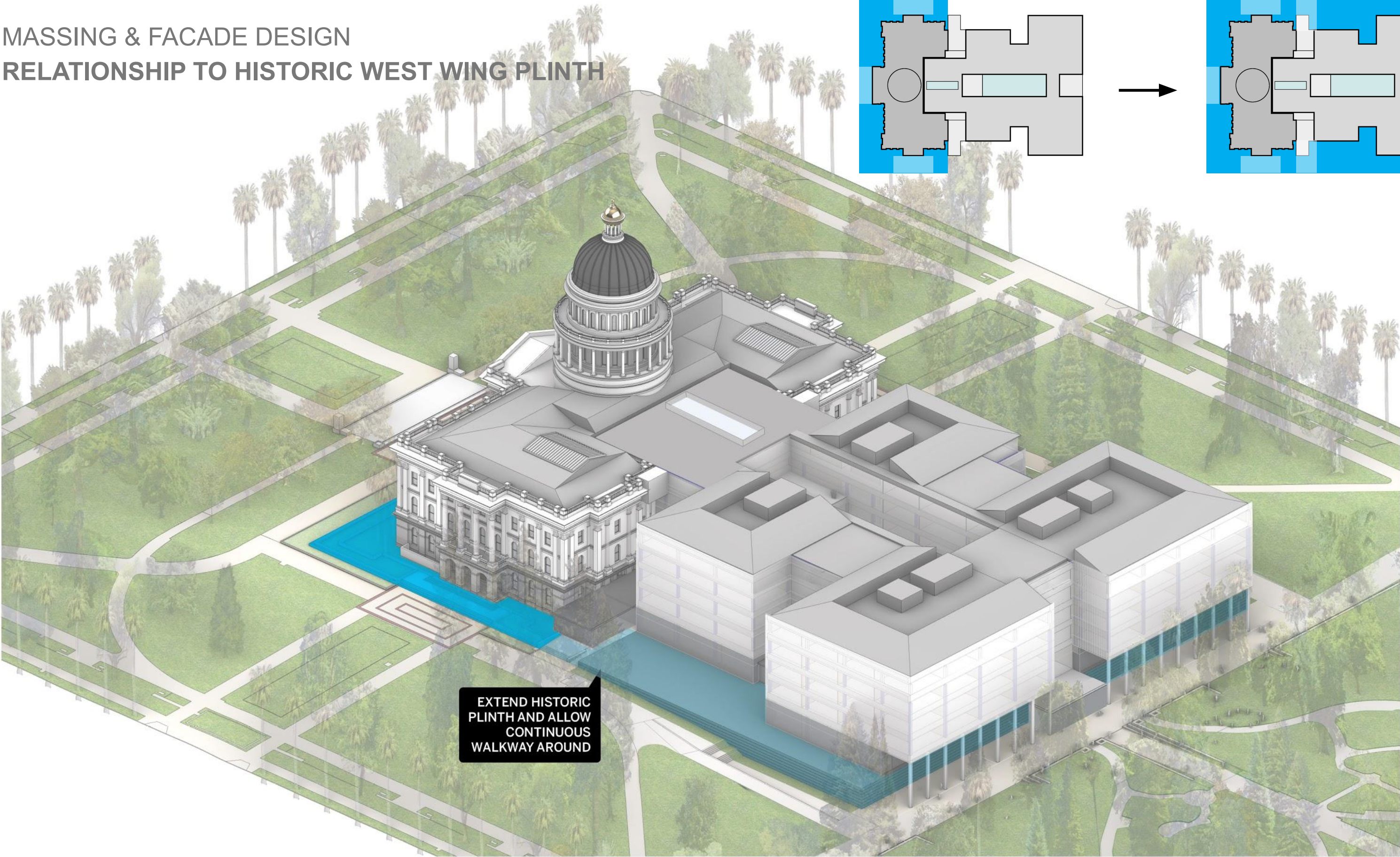
“California’s new Capitol Annex should... welcome all Californians, engage all Californians, safeguard the future of all Californians, & demonstrate healthful, accessible & sustainable designs...”

MASSING & FACADE DESIGN
RELATIONSHIP TO HISTORIC WEST WING

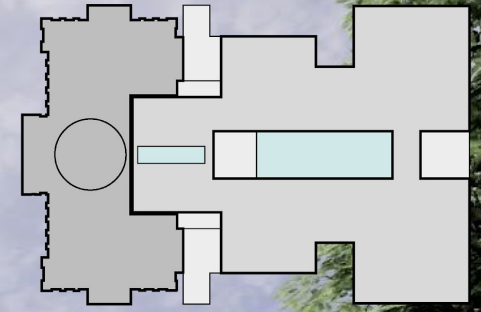
Welcoming, light & transparent



MASSING & FACADE DESIGN RELATIONSHIP TO HISTORIC WEST WING PLINTH

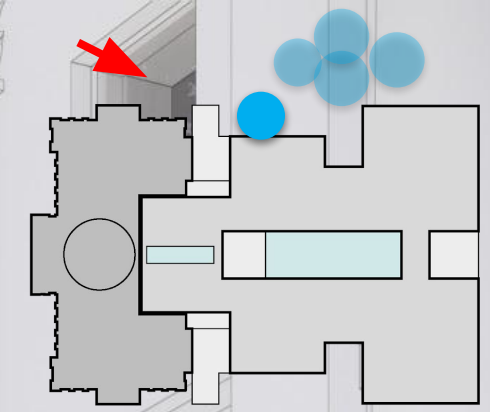


MASSING & FACADE DESIGN
RELATIONSHIP TO PARK & TREES



MASSING & FACADE DESIGN
RELATIONSHIP TO PARK & TREES

The design protects the Moon Tree and Sisters of Mercy grove on the north side of the new Annex



MASSING & FACADE DESIGN
"FIRST AMONG EQUALS"



An architectural rendering of a university campus. On the left is a large, classical-style building with a portico supported by tall columns. To its right is a modern building with a glass facade. The foreground shows a paved walkway with several people walking and talking. Two tall palm trees are on the left, and a large evergreen tree is on the right. The sky is blue with light clouds. The text "THANK YOU" is centered in the middle of the image.

THANK YOU